

# MEASURE P

*Information Only*



# CUHSD

## Background



6 High Schools



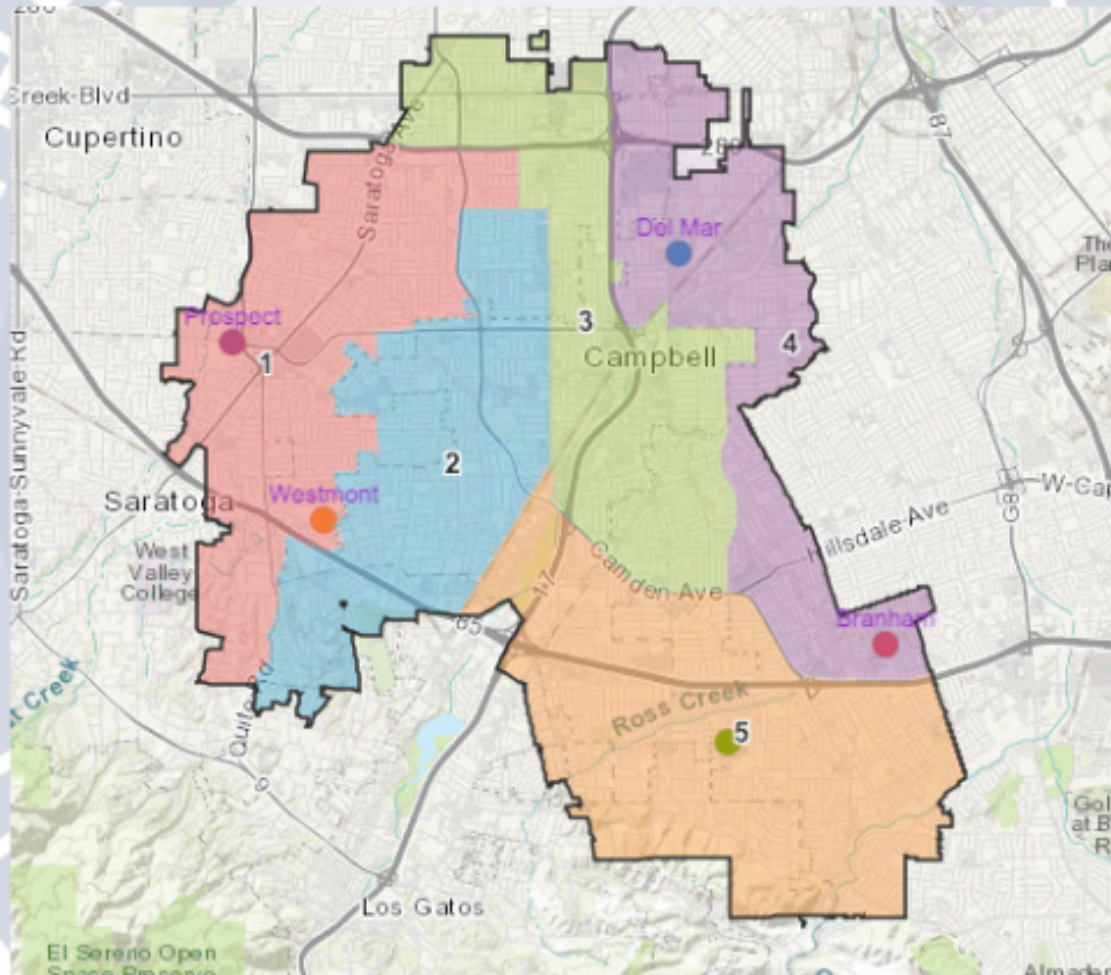
2 Adult Education Programs



8,600 Students



800 Staff



# CUHSD



- The Campbell Union High School District (CUHSD) serves:
  - More than 8,600 students at five comprehensive high schools
  - A continuation school
  - An adult school
  - A post-secondary school serving adults with disabilities as they transition into the workforce.
- **CUHSD has two key priorities:**
  - To ensure academic and career success for every student
  - To make sure that our schools are healthy, safe, well-maintained, and equipped to provide CUHSD students with the very best possible educational setting and current technology.
- Critical repairs and upgrades to our facilities have been identified as part of our Facilities Master Plan.
- The Governing Board has voted to place a Measure on the November 5, 2024 ballot to address these needs.

# CUHSD NEEDS

## *Background: Facilites Master Plan*



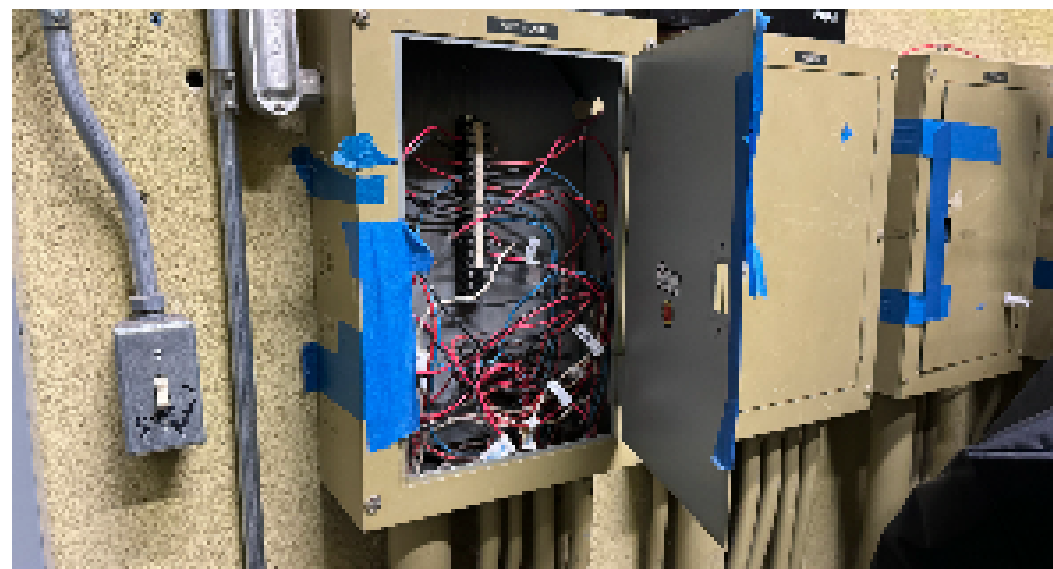
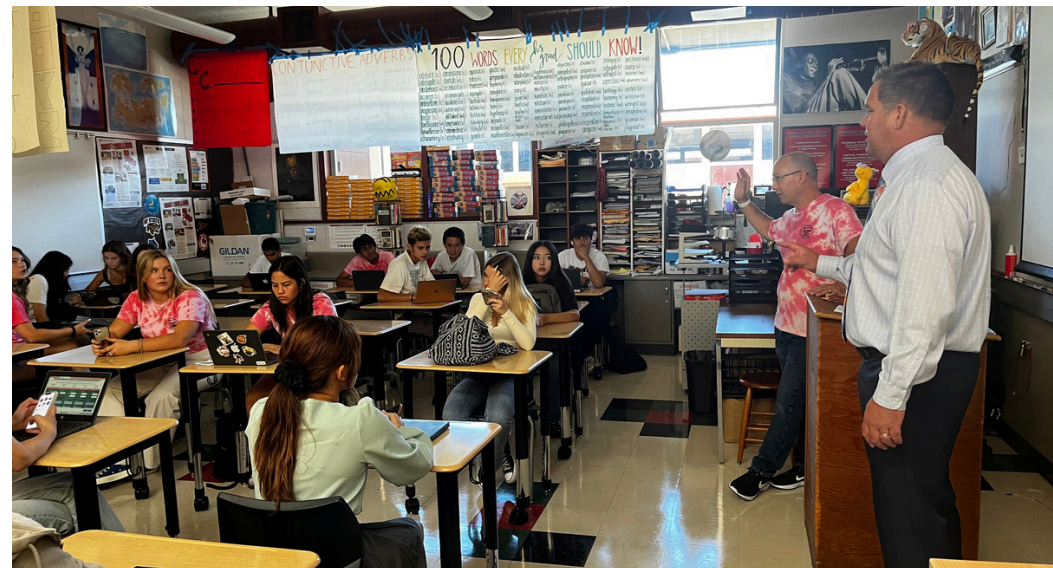
The CUHSD Board of Trustees received the Facilities Master Plan draft at the school board meeting on December 14, 2023.

View Facilities Master Plan Here or visit [www.cuhsd.org/FacilitiesMasterPlan](http://www.cuhsd.org/FacilitiesMasterPlan)

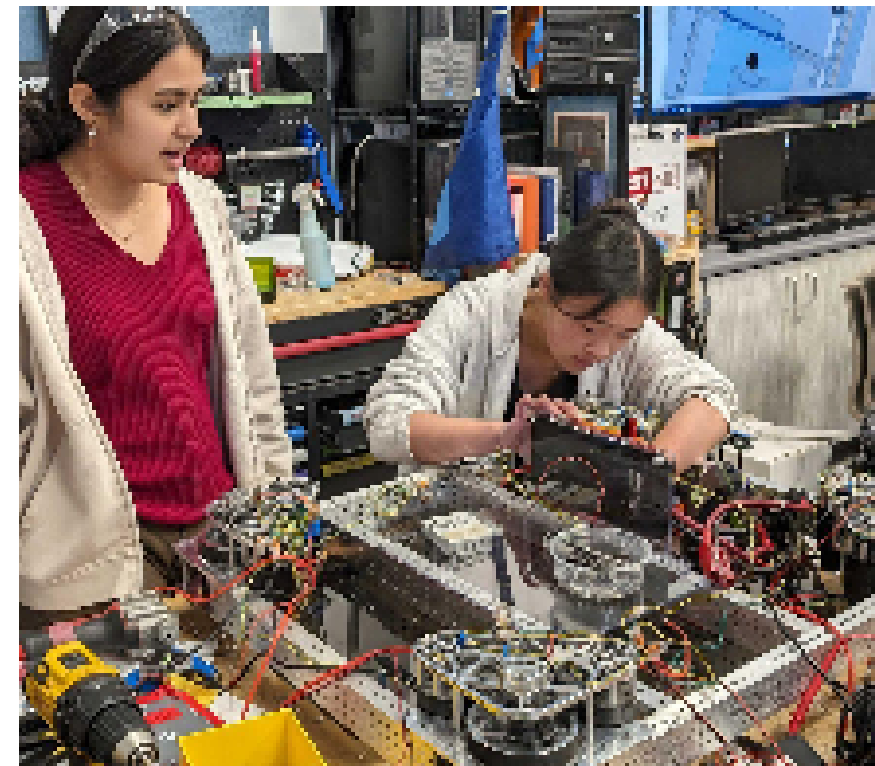


# MEASURE P

## *Project Summary*

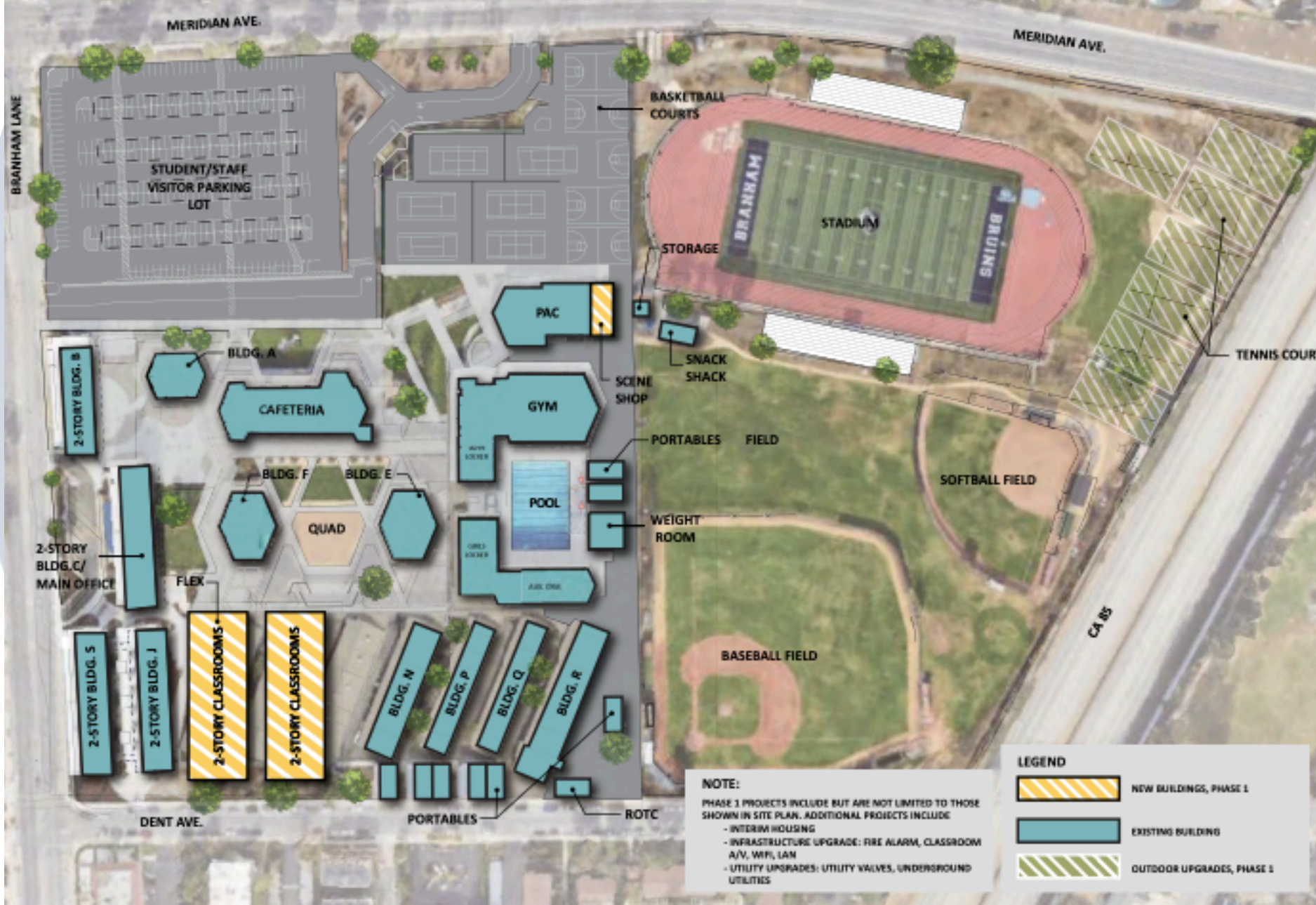


- **Provide** modern labs and career technical facilities and equipment to prepare students better for college and high-demand careers, including engineering, technology, and skilled trades
- **Make** repairs to older classrooms, restrooms, and support facilities including deteriorating roofs, plumbing, sewer, heating, ventilation, and electrical systems
- **Update** classrooms, facilities, and technology needed to support high-quality instruction in math, science, and engineering
- **Upgrade** older schools so they meet current health and building safety codes and provide proper access for students with disabilities
- **Improve** student safety and campus security including emergency communications systems, smoke detectors, fire alarms, and sprinklers
- **Replace** aging, deteriorating, and costly-to-maintain portable classrooms that are creating safety issues, with permanent classrooms that meet today's academic standard



# CUHSD

## Branham Demo & Phase 1 Plans



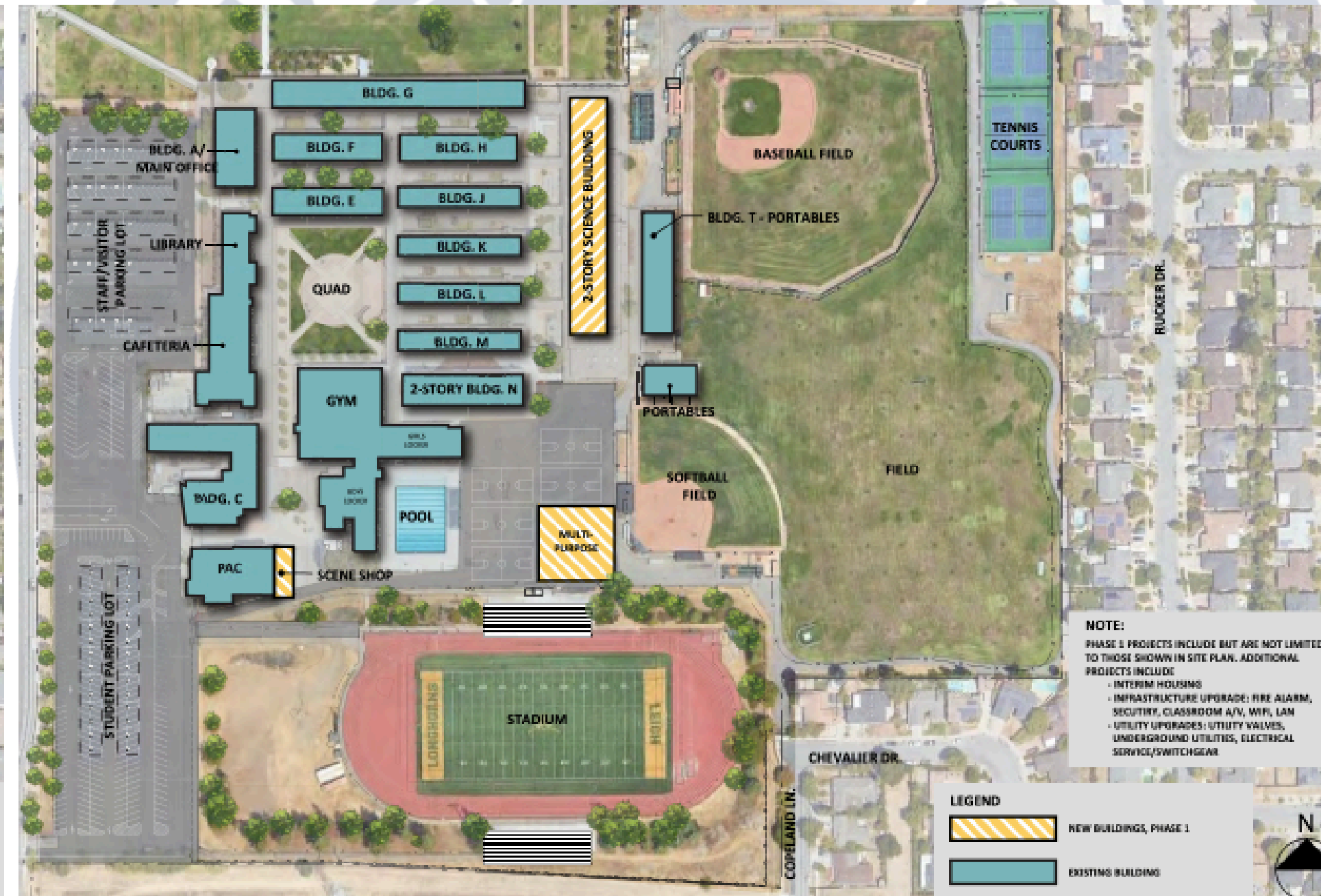
# CUHSD

## Del Mar Demo & Phase 1 Plans



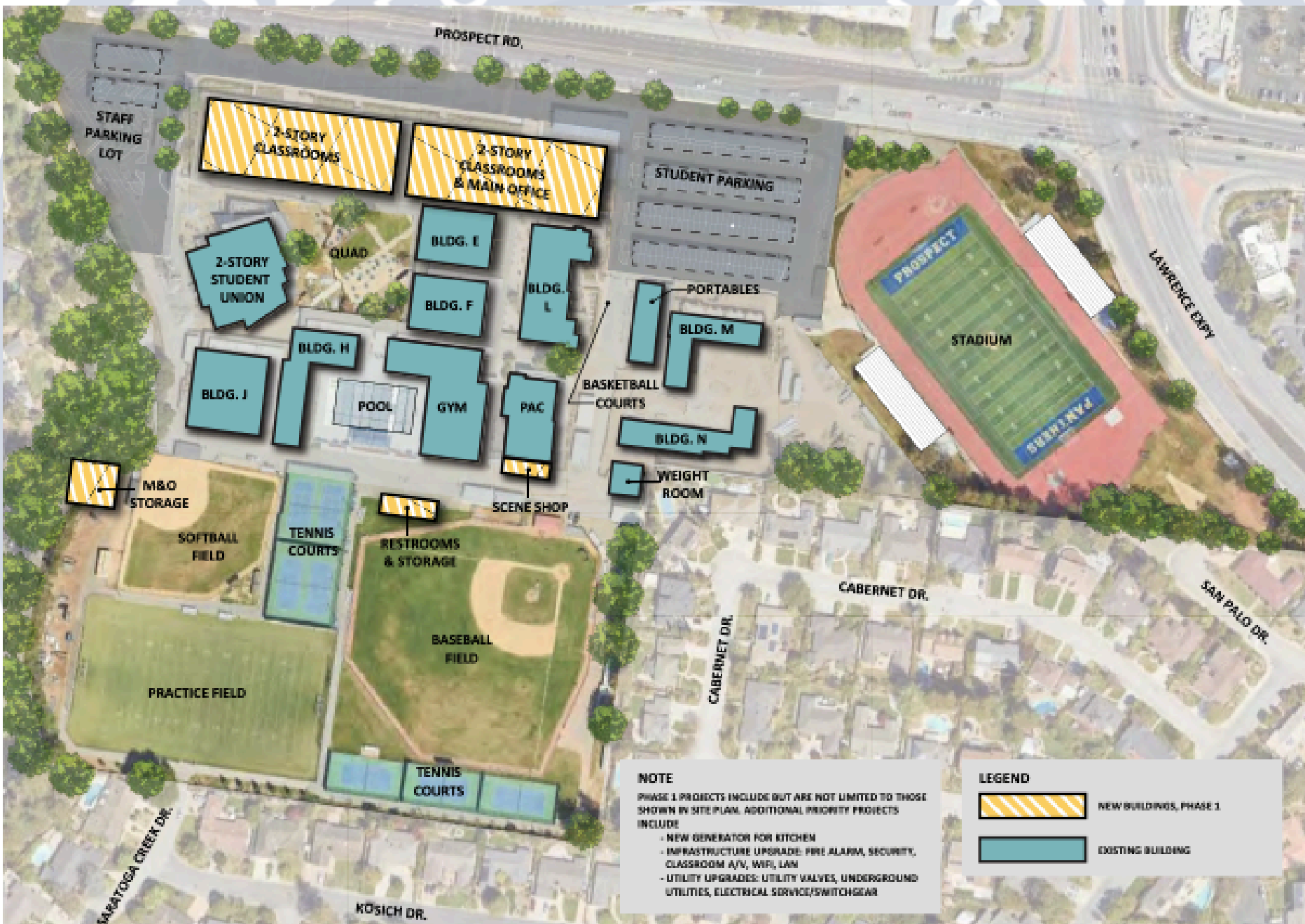
# CUHSD

## Leigh Demo & Phase 1 Plans



# CUHSD

## Prospect Demo & Phase 1 Plans





# CUHSD

## Westmont Demo & Phase 1 Plans



# MEASURE P

## *Safeguards*



- Measure P requires strict taxpayer safeguards.
- By law, all funds from Measure P must stay local, dedicated to CUHSD schools only.
- The State cannot take Measure P funding away.
- Independent Citizens' Oversight Committee,
- independent annual audits, and regular public reports ensure proper spending of funds.
- Measure P cannot be used to increase salaries, benefits, or pensions for administrators, teachers, or any other school employees.

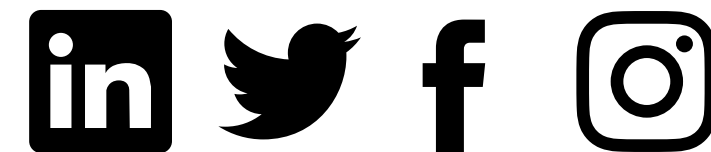
# MEASURE P

## *Cost*



- If approved by voters, a \$474 million bond translates to **about \$24.00 per year for every \$100,000 of assessed valuation.** The assessed valuation refers to taxable value, *not the market value of your home.*
- **The typical (Median) homeowner in our school district would pay about \$192 a year, or \$16 a month.**
- The tax will be levied through the full term of the bonds, which is expected to be through fiscal year 2050-2051.

# QUESTIONS?



@myCUHSD

WWW.CUHSD.ORG